

DATA-DRIVEN REPORTING FOR *MULTI-COURSE OPERATORS*



Multi-Course Operators (MCOs) face a unique set of challenges - **achieving steep revenue targets**, while optimizing the player experience and on-course **operational efficiency**.

It's critical that MCOs have **reporting that provides insight into their facilities' performance** - both from a **group and course perspective**, to drive revenue.

Leading MCOs like **KemperSports**, **Advance Golf** and **Premier Golf** (a subsidiary of Troon) are achieving excellent results using group reporting.

TAGMARSHAL'S INNOVATIVE, DATA-DRIVEN AND CONSOLIDATED REPORTING INCLUDES KEY ON-COURSE METRICS:



- High-level view of on-course operations performance vs. objectives.
- Ability to create benchmarks to track and optimize against.
- Correlation between added tee sheet capacity and impact on player experience.
- Quantify operator efforts and resultant outcomes.
- Visibility of team engagement and the effect across facilities.
- Creates a basis to charge premium rates.



USGA research shows marshal interactions are polarizing - scoring highly as positive attractors and negative detractors. **Tagmarshal's**

marshal notes and interactions provide insight into this key indicator.

CONTACT US:

Tagmarshal Headquarters
contact@tagmarshal.com
+1 470 823 1023

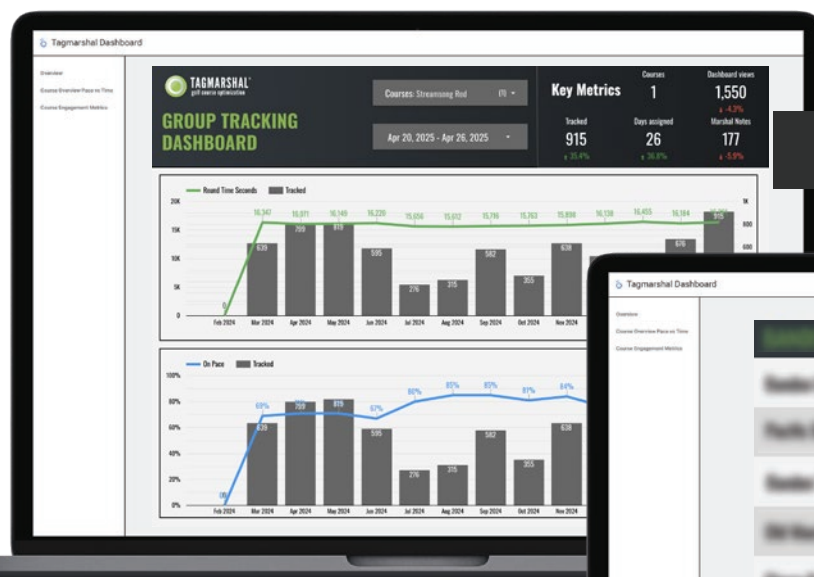
975 Cobb PI Blvd NW Suite, Kennesaw, GA 30144
tagmarshal.com
Golf Course Optimization

1 PASSIVE GROUP REPORTING:

- Passive tracking allows the operator to collect **key data insights** and metrics.
- **Monthly single overview** of rounds tracked, round times, on pace %, and marshal notes.
- **System engagement** - tracking of user interactions to make sure each course is fully utilizing Tagmarshal.
- **Monthly tracking dashboard**: by course or on group level.



TRACKING DASHBOARD



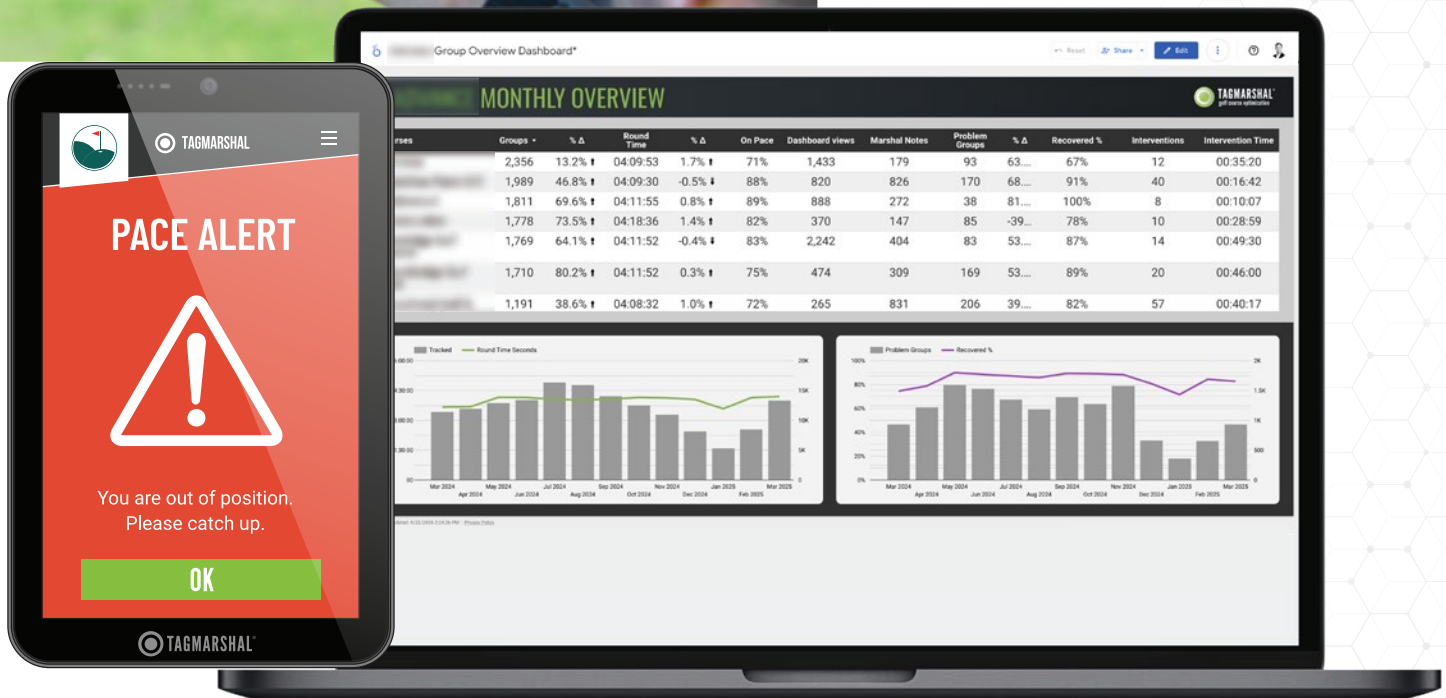
2

ACTIONABLE GROUP REPORTING:

- High-res 2Way cart screens used for **direct messaging** with players.
- Actionable tracking uses AI for automated identification of **Pace Disruptors**, recovery and intervention success rates, and intervention time.
- **Reporting frequency:** Tailored to daily, weekly and monthly reporting increments.

PACE DISRUPTORS:

- Uses automation to proactively identify playing groups that are out of position (10 min behind interval time) and 10 min behind goal time and tells Player Assistant/Marshal where to go.
- Notifications are automatically sent to pro with on-screen alert for players.
- The facility changes the outcome by proactively identifying these groups and intervening in real-time.



3 CUSTOM GROUP REPORTING FOR PREMIUM OPERATORS:

- **Bespoke reporting requirements** (e.g. rounds on pace, groups tracked).
- Includes **reporting on caddie and green speed performance**.
- **Monthly and daily view**, as well as day segments.
- Aids application of **variable goal times** and **optimal resource allocation**.

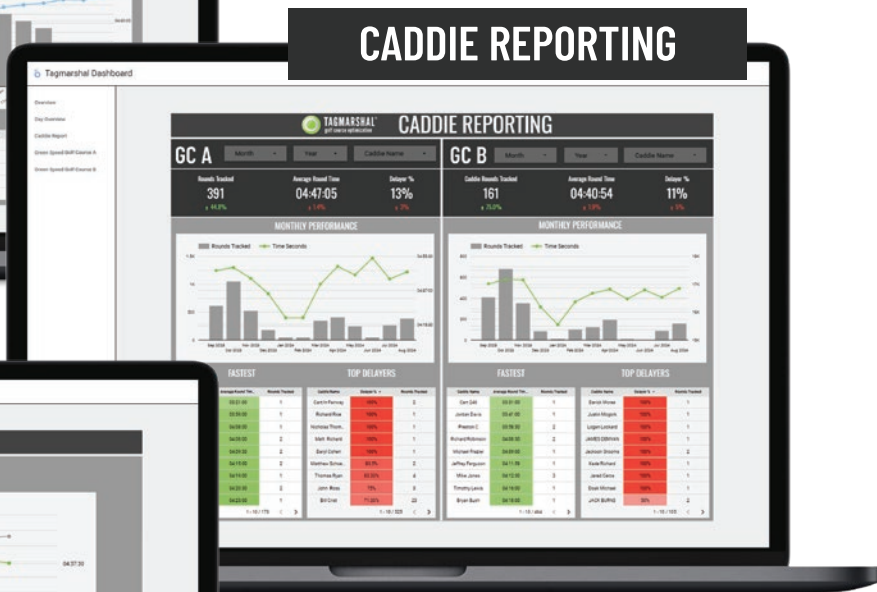
MONTHLY OVERVIEW



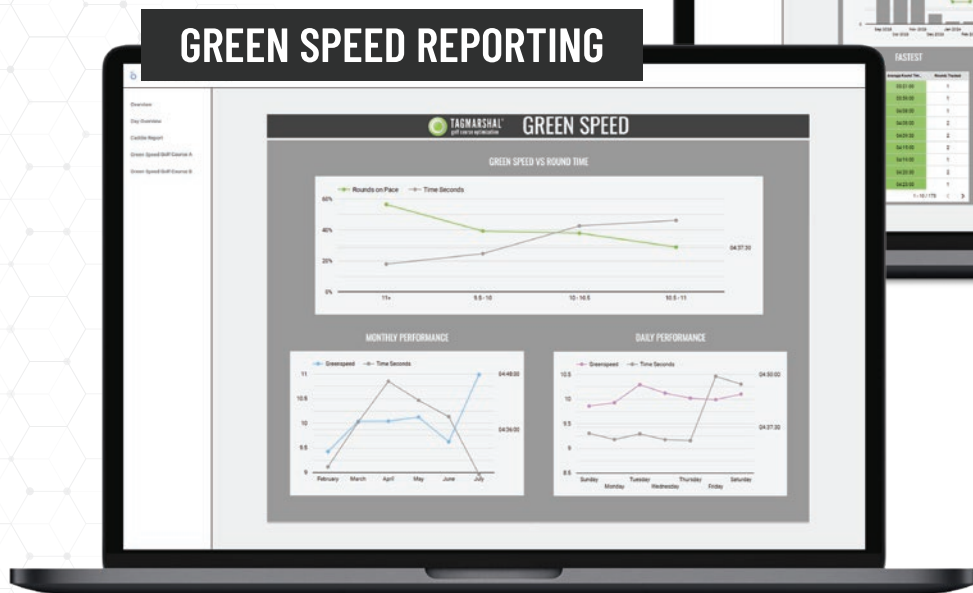
DAILY OVERVIEW



CADDIE REPORTING



GREEN SPEED REPORTING



CONTACT US:

Tagmarshal Headquarters
 contact@tagmarshal.com
 +1 470 823 1023

975 Cobb PI Blvd NW Suite, Kennesaw, GA 30144
 tagmarshal.com
 Golf Course Optimization

